

QPRN presents:

# **NAPS** North American Pain School

*An Educational Initiative of IASP and ACTION*

Controversies in Pain Research

## Program

June 19-June 24, 2022

*Château Montebello  
Montebello, QC, Canada*

[www.northamericanpainschool.com](http://www.northamericanpainschool.com)



#NAPainSchool

## Executive Committee



Jeffrey S. Mogil, Ph.D.  
(Director)

E.P. Taylor Professor of Pain Studies / Canada Research Chair in the Genetics of Pain (Tier 1) Dept. of Psychology, McGill University.



Christine T. Chambers, Ph.D.  
(Assistant Director)

Scientific director at Canadian Institutes of Health Research / Prof. Depts of pediatrics and Psychology & Neuroscience, Dalhousie University and IWK Health Centre.



Theodore Price, Ph.D.

Eugene McDermott Professor / Director of Center for Advanced Pain Studies, School of Behavioral and Brain Sciences, University of Texas at Dallas.



Yenisel Cruz-Almeida, Ph.D.,  
M.S.P.H.

Associate Professor & Associate Director, Pain Research & Intervention Center of Excellence, University of Florida.



Jennifer Haythornthwaite, Ph.D.

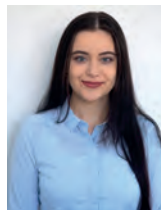
Professor, Dept. of Psychiatry & Behavioral Sciences, John Hopkins University School of Medicine.

## Coordination



Erwan Leclair, Ph.D.

Coordinator of the North American Pain School / Scientific coordinator of the Quebec Pain Research Network.



Iulia Tufa, B.Sc.

Coordinator of the North American Pain School / Coordinator of the Quebec Pain Research Network.



## Vision of NAPS

The North American Pain School (NAPS) will bring together leading experts in the fields of pain research and management to provide a unique educational and networking experience for the next generation of basic science and clinical pain researchers. We offer opportunities for scientific education, professional development, and connections with peers in a setting far removed from the lab and steeped in the character and culture of Quebec.

Led by an Executive Committee of permanent faculty, NAPS will take place in the first weeks of summer to take full advantage of all that Quebec has to offer—from the Festival International de Jazz de Montreal to nearby wilderness activities. The venue for NAPS will facilitate lectures by both faculties and students as well as intimate breakout conversations and offer an array of recreational opportunities.

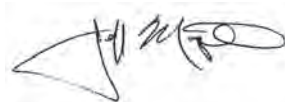
Each year's program will have a different theme, and will bring together approximately 30 trainees with six dynamic, internationally recognized pain investigators from around the world and NAPS permanent faculty for an intensive four-day workshop.

## Director's Message: Overview of the 2022 North American Pain School

Dear colleagues

Welcome (and welcome back) to NAPS! It's been a long two years, and we're so happy to be able to finally present NAPS (which cannot and will never be virtual!) for those of you who applied all the way back in 2019. Every NAPS is designed to be truly multidisciplinary, and to focus on career development as well as science, but every year we pick a theme that is topical and relevant to guide us in our faculty invitations. For our fifth installment, we have chosen the theme "Controversies in Pain Research". Our field, like most others in science, is filled with controversies, some that have raged for many decades. Such controversies I believe are healthy for the field; when we run out of controversies we'll have either solved the problem of pain entirely or else hit a complete dead end. We've invited a very accomplished and exciting set of six visiting faculty, who, in addition to participating in our workshops, have been asked to give us their position on the controversy of their choice. In addition to the permanent and visiting faculty, we all will have the privilege and pleasure of interacting with patient partners and supporters of NAPS. New additions to NAPS this year include a special session on working with philanthropies, a new workshop on scientific entrepreneurship, a revitalized session on communication with non-scientists, and of course three new Executive Committee (permanent faculty) members: Yenisel Cruz-Almeida, Jennifer Haythornthwaite, and Ted Price. Back from 2019 are student talks, workshops on presentation skills, mentoring, and psychophysical testing, "topic lunches", an "Ask-a-Patient" session, and the famous and always entertaining student debates. And of course the times when the true learning occurs, during coffee breaks, meals (including special regional cuisine), bonfires, yoga, and our special outing on the last day of NAPS. I and the rest of the Executive Committee are beyond excited to meet and learn with a new cohort of pain's best-and-brightest.

See you in June!

A handwritten signature in black ink, appearing to read "J. Mogil", with a stylized flourish at the end.

Jeffrey S. Mogil, Ph.D.  
Director, North American Pain School

## Visiting Faculty



**Catherine Bushnell, Ph.D.**

- Scientific director, Division of Intramural Research
- Senior Investigator, Pain and Integrative Neuroscience Branch
- National Center for complementary and Integrative Health (NCCIH)
- National Institutes of Health (NIH), Bethesda, Maryland



**Sean Mackey, M.D., Ph.D.**

- Redlich Professor, Stanford University Medical Center
- Department of Anesthesiology, Perioperative and Pain Medicine Neurosciences and Neurology (courtesy)
- Chief, Division of Pain Medicine
- Director, Systems Neuroscience & Pain Lab



**Yoram Shir, M.D.**

- Professor of Anesthesia & Edwards Chair in Clinical Pain, McGill University
- Director, the Alan Edwards Pain Management Unit, McGill University Health Centre



**Mark P. Jensen, Ph.D.**

- Professor and Vice Chair for Research, Department of Rehabilitation Medicine, University of Washington



**Kathleen Sluka, P.T., Ph.D., F.A.P.T.A.**

- Department of Physical Therapy and Rehabilitation Science
- Department of Neuroscience & Pharmacology
- Pain Research Program, University of Iowa



**Rajesh Khanna, Ph.D.**

- Professor, Department of Molecular Pathobiology
- Director, NYU Pain Research Center, New York University, College of Dentistry

## Patient partners



**Virginia McIntyre**

- Patient partner
- Board member, People in Pain Network
- Facilitator, Annapolis Valley Pain Self Management Education/Support Group



**Jodi Borenstein**

- Patient partner





## NAPSters



**Zeynab Alshelh**

@zeynabalshelh

Harvard University, USA

Supervisor: Marco Loggia

"Never ending."



**Junie Carrière**

@juniecarriere

University of Sherbrooke, Canada

Asst. Professor

"What you expect is what you will get."



**Tracy Anastas**

@tmanastas

University of Indianapolis, USA

Supervisor: Adam Hirsh

"Interruptions happen, but they might be affecting provider pain care decisions."



**Aidan Cashin**

@AidanCashin

University of New South Wales, Australia

Supervisor: James McAuley

"Investigating the mechanisms of healthcare interventions for optimisation and translation into clinical practice and health policy."



**Desiree Azizoddin**

@DesAzizoddin

University of Oklahoma, USA

Asst. Professor

"My primary research focuses on developing behavioral pain interventions for cancer pain utilizing novel technologies including mobile health interventions."



**Iris Coppieters**

@coppieters\_i

Vrije Universiteit Brussel, Belgium

Supervisor: Jo Nijs

"Imaging the role of the brain in chronic spinal pain pathophysiology and treatment responses."



**Clare Diester**

@claredstar

University of Basel, Switzerland

Supervisor: Sidney Stevens Negus

"Turns out reliably quantifying pain in mice can be a real pain."



**Arvina Grahl**

@grahlarvina

Harvard University, USA

Supervisor: Vitaly Napadow

"To love or not to love your clinician, that is the question (spoiler: chronic pain patients should love them)!"



**Leah Elias**

@leahthePhDya

Johns Hopkins University, USA

Supervisor: Ishmail Abdus-Saboor

"This small group of sensory neurons signal all the good feels of cuddles while maintaining social distancing."



**Flavia Kapos**

@KaposFP

Seattle's Children Hospital, USA

Supervisor: Anjum Hajat

"Good news: all we have to do to fix pain inequities is simply eliminate the deepest-rooted problems in our society. Shall we?"



**Kimberly Gomez**

@Kingmz6

New York University, USA

Supervisor: Rajesh Khanna

"Regulation of NaV1.7 voltage-gated sodium channels by collapsin response mediator protein 2 (CRMP2)."



**Samsuk Kim**

@samsuk\_kim

University of Detroit Mercy, USA

Supervisor: Anna L. Kratz

"Examining the Dynamic Relationship Between Positive and negative emotions as a function of pain, fatigue and stress in individuals with and without fibromyalgia."





### Mahshad Kolahdouza

@mahshadkn

University of Toronto, Canada

Supervisor: Michael Salter

"I want to see if immune cells in the meninges get enraged after injury and so in turn try to get the cells in the spinal cord super mad, and if that causes pain."



### Shreela Palit

@Dr\_Shreela

Nemours Children's Health, USA

Supervisor: Roger Fillingim

"Adulting is tough, adulting with pain is tougher...especially without the right support and resources."



### Tyler Nelson

@tylernelson406

University of Pittsburgh, USA

Supervisor: Bradley Taylor

"I research the neuropeptidergic inhibition of spinal transmission of neuropathic pain."



### Maria Pavlova

@mariavpavlova

University of Calgary, Canada

Supervisor: Melanie Noel

"Let's change how parents and children talk about pain."



### Victória Oliveira

@vickroliveira13

University of Sao Paulo, USA

Supervisor: Camila Squarzoni Dale

"May the light be with you, especially in the dark "pain" days!"



### Sandra Poulson

@SJP\_AScientist

University of Toronto, Canada

Supervisor: Loren J. Martin

"Cholecystokinin helps mice feel others' painful feels."



## Scott Ravyts

@scottravyts

Virginia C University, USA

Supervisor: Joseph Dzierzewski

"When insomnia hurts - exploring the dark side of sleep"



## Shannon Tansley

@ShannonTansley

McGill University, Canada

Supervisor: Jeffrey Mogil

" Microglia are complicated!!"



## Laura Sirucek

@LauraSirucek

University of Zurich, Switzerland

Supervisor: Petra Schweinhardt

" Is it the truth, is it a lie that an overexcited brain has a finger in the "low back pain" pie?"



## Matthieu Vincenot

@mattvincenot

University of Sherbrooke, Canada

Supervisor: Guillaume Léonard

"Endogenous Pain Mechanisms : simply, clear and accessible"



## Nadia Soliman

@Nadia\_Soliman\_

Imperial College London, UK

Supervisor: Andrew Rice

" It's high time to address cannabis & animal pain research"



## Rachel Weinberg

@RachelW152

Johns Hopkins University, USA

Supervisor: Michael Caterina

" Sometimes it hurts to have a thick skin: Pain in hereditary palmoplantar keratodermas"

## NAPSters (PRF-NAPS correspondents)



**Jessica Archibald**

@ArchibaldJes

University of British Columbia, Canada

Supervisor: John L.K. Kramer

"Look at all these brain measures: blood flow, electrical activity and metabolites! - They might have something to do with pain."



**Don Daniel Oca**

@DonOca

McGill University, Canada

Supervisor: Catherine Ferland

"Trial and error to assess and treat pediatric chronic pain? Ain't nobody got time for that!"



**Feni Kadakia**

@kadakiafeni

University of Cincinnati, USA

Supervisor: Steve Davidson

"I'm trying to figure out how this brain area, the insula, contributes to the pain experience."



**Danielle Perro**

@dperro\_wrh

University of Oxford, UK

Supervisor: Katy Vincent

"It affects 1 in 10 women, but we know next to nothing about it. Welcome to academia?"



**Joseph Lesnak**

@LesnakJoe

University of Iowa, USA

Supervisor: Kathleen Sluka

"Exercise, it works."





# DAY BY DAY

SUNDAY, JUNE 19<sup>TH</sup>

MONDAY, JUNE 20<sup>TH</sup>

TUESDAY, JUNE 21<sup>TH</sup>

WEDNESDAY, JUNE 22<sup>TH</sup>

THURSDAY, JUNE 23<sup>TH</sup>

FRIDAY, JUNE 24<sup>TH</sup>

Sunday,  
June 19<sup>th</sup>

2:00-5:00 p.m.  
Lobby

Registration and Check-in

4:30-5:30 p.m.  
Foyer Outaouais

Welcoming Cocktail Hour

4:45-5:00 p.m.  
Outaouais 1

NAPS-PRF Correspondents Meeting  
Christine Chambers and Gregory Carbonetti

5:30-6:00 p.m.  
Outaouais 1

Opening Remarks  
- Director's Welcome  
- Supporters' Welcome  
Hélène Beaudry, QPRN  
Gregory Carbonetti, PRF  
Serenna Dastouri, IMHA/CIHR  
Christina Spellman, Mayday Fund  
Alison Teitelbaum, IASP  
- Introduction of Executive Committee  
- Introduction to Yoga with Ondine  
- Debate Instructions and Teams

6:00-6:20 p.m.  
Outaouais 1

Patient Partner Intros  
Jodi Borenstein, Virginia McIntyre

6:20-7:10 p.m.  
Outaouais 1

Keynote Lecture: Catherine Bushnell  
**Controversies in Placebo Mechanisms**

7:15-8:45 p.m.  
Aux Chantignoles

Dinner

8:45-9:45 p.m.  
Outaouais 1

Icebreaker Games

Monday  
June 20<sup>th</sup>

7:00-7:50 a.m.  
Foyer Outaouais

Yoga with Ondine

8:00-9:00 a.m.  
Aux Chantignoles

Breakfast

9:00-10:00 a.m.  
Outaouais 1

Meet the Executive Committee  
**Jeffrey Mogil, Christine Chambers,  
Jennifer Haythornthwaite, Theodore Price,  
Yenisel Cruz-Almeida**

10:00-10:30 a.m.  
Outaouais 1

Student Presentations (#1-3)

10:30-11:00 a.m.  
Foyer Outaouais

Coffee Break

11:00-11:50 a.m.  
Outaouais 1

Visiting Faculty Talk: Mark Jensen  
**Publishing Your Research Findings:  
Strategies for Success**

11:50-12:20 p.m.  
Outaouais 1

Student Presentations (#4-6)

12:30-3:00 p.m.  
Aux Chantignoles

Topic Lunch and Break



Monday,  
June 20<sup>th</sup>

3:00-4:00 p.m. Outaouais 1	Student Presentations (#7-12)
4:00-4:20 p.m. Foyer Outaouais	Coffee Break
4:20-4:50 p.m. Outaouais 1	Special Session: Christina Spellman <b>Thinking Outside the Funding Box: Working With Philanthropies</b>
4:50-5:40 p.m. Outaouais 1	Student Presentations (#13-17)
6:00-7:30 p.m. Aux Chantignoles	Dinner
7:30-9:10 p.m. Outaouais 1	Workshop: Making the Most of Mentors <b>Jennifer Haythornthwaite</b>
9:15-11:00 p.m. Meet in the lobby	Bonfire

Tuesday,  
June 21<sup>st</sup>

7:00-7:50 a.m.  
Foyer Outaouais

Yoga with Ondine

8:00-9:00 a.m.  
Aux Chantignoles

Breakfast

9:00-9:30 a.m.  
Outaouais 1

Ask-a-Patient

Jodi Borenstein, Virginia McIntyre

9:30-10:30 a.m.  
Outaouais 1

Student Presentations (#18-23)

10:30-10:50 a.m.  
Foyer Outaouais

Coffee Break

10:50-11:40 a.m.  
Outaouais 1

Visiting Faculty Talk: Rajesh Khanna

The Last of The Unplucked Gems:  
Targeting Nav1.7 for Chronic Pain

12:00-2:30 p.m.  
Aux Chantignoles

Topic Lunch and Break

2:30-4:10 p.m.  
Outaouais 1 /  
Outside

Workshop: Entrepreneurship in Science,  
Pitching and Financing Your Idea

Theodore Price

Tuesday,  
June 21<sup>st</sup>

4:10-4:30 p.m.  
Foyer Outaouais

Coffee Break

4:30-5:30 p.m.  
Outaouais 1

Student Presentations (#24-29)

6:00-7:30 p.m.  
Aux Chantignoles

Dinner

7:30-9:00 p.m.  
Outaouais 1

Workshop: Interviewing and  
Diagnosing Pain Patients

Yoram Shir

9:00-11:00 p.m.

Debate Preparation

Wednesday,  
June 22<sup>nd</sup>

7:00-7:50 a.m.  
Foyer Outaouais

Yoga with Ondine

8:00-9:00 a.m.  
Aux Chantignoles

Breakfast

9:00-9:50 a.m.  
Outaouais 1

Visiting Faculty Talk: Kathleen Sluka  
**Why Does Sex Matter In Pain Research?**

9:50-10:10 a.m.  
Foyer Outaouais

Coffee Break

10:10-11:50 a.m.  
Outaouais 1

Workshop: Writing for the Public: How to Write  
About Your Research to People Without (and With)  
a Science Degree  
**Gregory Carbonetti**

12:00-2:30 p.m.  
Aux Chantignoles

Topic Lunch and Break

2:30-4:30 p.m.  
Quebec/Ontario

Workshop: Pain Testing in Humans  
**Yenisel Cruz-Almeida**

4:30-6:00 p.m.  
Foyer Quebec/  
Ontario

Coffee Break and Debate Preparation

6:00-7:30 p.m.  
Terrasse

BBQ Dinner

7:30-9:10 p.m.  
Outaouais 1

Workshop: Style Over Substance:  
Giving Better Talks  
**Jeffrey Mogil**

Thursday,  
June 23<sup>rd</sup>

7:00-7:50 a.m.  
Foyer Outaouais

Yoga with Ondine

8:00-9:00 a.m.  
Aux Chantignoles

Breakfast

9:00-9:50 a.m.  
Outaouais 1

Visiting Faculty Talk: Sean Mackey  
**Can Real World Data Replace Randomized  
Controlled Trials?**

9:50-11:30 a.m.  
Outaouais 1/  
Outside

Workshop: Breaking Barriers: Gender,  
Unconscious Bias, and Your Career  
**Christine Chambers**

12:00-5:00 p.m.  
Meet in the lobby

Whitewater Rafting (Lunch boxes provided)

6:30-10:00 p.m.  
Foyer Outaouais

Cocktails, Banquet, Student Debate  
and Graduation Ceremony

10:00 p.m.  
Foyer Outaouais

DJ and Dancing

Friday,  
June 24<sup>th</sup>

Early birds  
Lobby

Breakfast Lunch Box

8:00-9:45 a.m.  
Aux Chantignoles

Breakfast

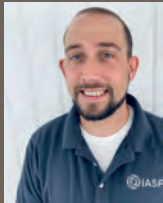
Before 12:00 noon  
Lobby

Check-out

Shuttle departures:  
(See shuttle schedule for specific details)

## PRF-NAPS Correspondents Program

The Executive Committee of NAPS is dedicated to engaging participants and other pain researchers using all of today's available tools. To this end, the IASP Pain Research Forum (PRF) has committed to sponsor five NAPS participants as special "PRF Correspondents." The correspondents will reach others in the pain field through first-hand reporting online and through social media through content for the PRF website — including scientific session recaps, interviews with faculty, blog posts — and through live reporting on social media like Twitter. This initiative will benefit those outside of NAPS and help these five participants hone their science communications and writing skills.



**Gregory Carbonetti, Ph.D.**  
IASP PRF Senior manager





## Sponsors

ACTION (Analgesic, Anesthetic, and Addiction Clinical  
Trial Translations, Innovation, Opportunities, and Networks)  
[www.action.org](http://www.action.org)

CIHR (Canadian Institute of Health Research)  
Institute of Musculoskeletal Health Arthritis Trial Translations,  
Innovation, Opportunities, and Networks)  
[www.cihr-irsc.gc.ca](http://www.cihr-irsc.gc.ca)

The Mayday Fund  
[www.maydayfund.org](http://www.maydayfund.org)



## Organizers

The International Association for the Study of Pain  
[www.iasp-pain.org](http://www.iasp-pain.org)

The Quebec Pain Research Network  
[www.qprn.ca](http://www.qprn.ca)



## Supporters

NAPS appreciates support from:

The Canadian Pain Society  
[www.canadianpainsociety.ca](http://www.canadianpainsociety.ca)



USASP (US association for the Study of Pain)  
<https://www.usasp.org>





# North American Pain School

## Coordination team

Erwan Leclair, Ph.D.  
naps@iasp-pain.org

Iulia Tufa, B.Sc.  
naps@iasp-pain.org

[www.northamericanpainschool.com](http://www.northamericanpainschool.com) #NAPainSchool

Photo Credits: Cover: davejdoe via Flickr; Pg 5: Dennis Jarvis via Flickr